

# WAGNER : Rheingold

## Vorspiel

*II. Horn in Es*  
*Ruhig heitere Bewegung*

II. Horn in Es  
*Ruhig heitere Bewegung*

*p*

Measures 1-12 of the II. Horn part in E-flat major, 6/8 time. The music features a melodic line with a dynamic marking of *p* (piano) at the beginning.

*VIII. Horn in Es*  
*Ruhig heitere Bewegung*

VIII. Horn in Es  
*Ruhig heitere Bewegung*

*p*

3

*immer p*

Measures 1-12 of the VIII. Horn part in E-flat major, 6/8 time. The music features a melodic line with a dynamic marking of *p* (piano) at the beginning and *immer p* (always piano) later in the passage. A triplet of eighth notes is marked with the number 3.

# WAGNER : Götterdämmerung

## 2. Akt, 2. Szene

**II. Horn in F**  
*Gemächlich*

## 3. Akt, 1. Szene

**II. Horn in F**

## 2. Akt, 1. Szene

**IV. Horn in F**

(+) auch gestopft üblich

## 3. Akt

**IV. Horn in C**

Vorspiel / 1. Akt

*IV.Horn in B*

Musical notation for IV.Horn in B, featuring a melodic line with a *p marc.* dynamic marking.

*IV.Horn in Es*

Musical notation for IV.Horn in Es, featuring a melodic line with a *p marc.* dynamic marking.

*II.Horn in B*

Musical notation for II.Horn in B, including a *+IV.* marking and a *f* dynamic marking.

*IV.Horn in D*

Musical notation for IV.Horn in D, featuring a *p* dynamic marking.

WAGNER : Lohengrin

3. Akt

*II.Horn in D*

*unisono*

Musical notation for II.Horn in D unisono, featuring a *ff* dynamic marking and a *3* marking.

# WAGNER : Rienzi

1. Akt, Finale

*II. Horn in Es*  
*Maestoso*

*mf* *p*

# WAGNER : Parsifal

3. Akt

*II. Horn in F*  
*Sehr langsam*

*p espressivo* *dim.*

# WAGNER : Siegfried

2. Akt, Vorspiel

*IV. Horn in E*  
*gestopft!*

*sf* *dim.* *p* *cresc. - - sf*

*II. Horn in E*  
*gestopft!*

*sf* *p* *cresc.* *sf*

HKRÖGER

# WAGNER : Meistersinger

3. Akt, 3.Szene

## IV.Horn in D

*f* *dim.*

*p* *più p* *pp*

2. Akt, Prügelszene

## II.Horn in F

*+IV. Lebhaft*  
*p marc.* *poco cresc*

*dim. p*

*poco f*

*f*

*più f* *ff*

HKRÖGER

7. Szene

II.Horn in F

*f* **5** *f* *f* *sehr markiert* **28** *in E* *in F* *ff*

WAGNER : Tristan und Isolde

II.Horn in F

*p* **3** *più p* *p*

## WAGNER : Walküre

II. Horn in E  
+IV. *Belebt*

2. Akt, 2. Szene

*p*

6

*p*

*poco cresc.*

*cresc.*

*p* *pp*

3. Akt, 1. Szene

II. Horn in E  
+IV. *Lebhaft*

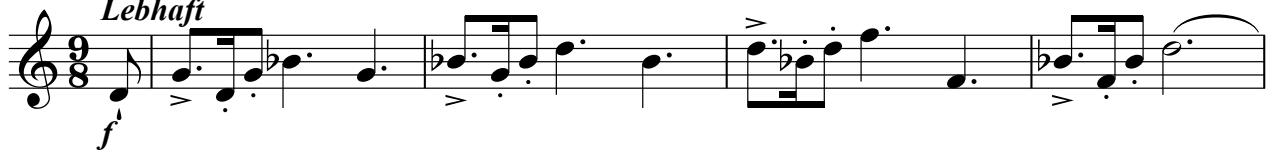
*p*

*cresc.*

*f*

## "Walkürenritt"

## VI.+VIII.Horn in E

*Lebhaft*

## V.+VII.in E



## V.-VIII.in E

